

## OD-2050HD

### 2-MegaPixel IR Outdoor Vandal PoE IPCAM

- 16:9 Full HD Video Resolution, Support up to 1080P@30fps
- IP66 Weather and Vandal Proof housing for Outdoor Environment
- Built-in IR LED and IR-Cut Removable for Day & Night Use
- Support 802.3af Power over Ethernet
- With 3~9mm, Auto Iris, Varifocal Lens for Wide or Telescopic View
- Multiple H.264, Motion JPEG and MPEG-4 Video Streams

The OD-2050HD is the high-end network camera with IP66 rated weather and vandal proof housing.

The built-in IR LED can provide additional light source when the environment is dim or even dark. It also equips a 3~9mm varifocal lens and can be used in various situations, no matter the installer needs a wide angle or a telescopic view.

OD-2050HD is a member of AirLive's 2.0 Megapixels IP camera family. With its full blown network functions, such as H.264 video streaming, Power over Ethernet, and ONVIF, it can be easily integrated into your existing network. What's more, installer can also choose AirLive's NVR or CamPro Professional as the back-end recording solution, and take it into middle-to-large surveillance project.

The video quality of OD-2050HD can be up to 1080P@30fps, which means it can provide a smoother and more detailed image. The high video quality can help user to review the recorded events in a more clear and distinct way. OD-2050HD suits applications such as parking lots, warehouses, loading/unloading bays, seaports and airports.



### Vandal Proof IP66 IP Camera with Auto Iris Varifocal Lens

The OD-2050HD is a Dome type IP Camera equipped with IR LED and automatic removable mechanical IR-cut filter. It can capture clear image under a dim environment with these built-in gears. The 3 to 9 mm varifocal lens makes it cover from 120° to 40° viewing angle (horizontal). Auto iris supported is another benefit of OD-2050HD. The auto iris function will prevent the image from over exposure, and keep more detailed in the video. The Vandal Proof and IP66 rating housing protect OD-2050HD from malicious attack and harsh climate. Combine with WMK-2056 installer can hang OD-2050HD in an outdoor environment. For the wide viewing angle, auto iris and robust housing, the OD-2050HD will be the best choice for open, public and risky area surveillance.

Manufacturer

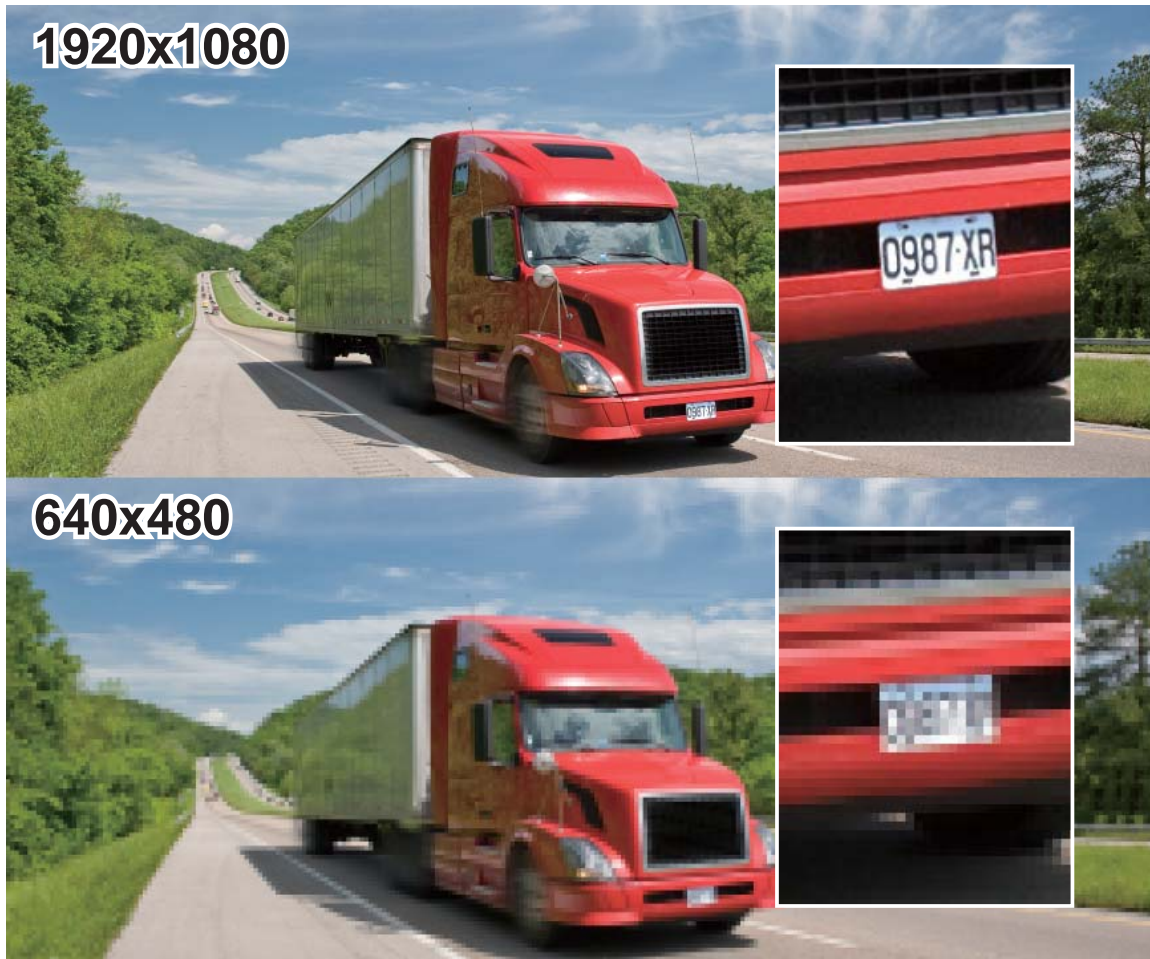
**OvisLink Corp.**

5F, No.96, Min-Chuan Rd., Hsin-Tien Dist., New Taipei City 231, TAIWAN

[www.airlive.com](http://www.airlive.com)

## 2.0 Mega-Pixel Video Quality 6X Bigger than VGA Resolution

AirLive OD-2050HD offers high quality image at maximum 1080P@30FPS. It comes 6X bigger resolution compared to a Normal CCTV Camera. One of the most compelling advantages of Mega Pixel surveillance systems is the ability to capture more details in a frame and at the same time not missing any finer details that are useful for license plate identification and human recognition. The new CMOS sensor also provides a smoother and clearer video quality by 30 fps performance; the image will be smoother when compare with older 15fps.



## H.264 Compression

H.264 is a high performing video compression standard that boasts a much higher compression ratio than MJPEG or MPEG-4, drastically reducing file sizes and conserving valuable network bandwidth and storage space. With up to 90% reduction in file size, a 1 MB image can be drastically reduced to as low as 10KB using H.264.

## Built-In IR and ICR

AirLive OD-2050HD is designed for 24hr indoor/outdoor surveillance even in the harshest conditions. AirLive OD-2050HD is equipped with high resolution CMOS sensor with infrared LEDs with up to 20m working distance. The auto-changeable IR filter (ICR) inside also provides superior day/night performance. It also offers many important features such as PoE and digital input and output for integrating external alarm & sensor.

Manufacturer

**OvisLink Corp.**

5F, No.96, Min-Chuan Rd., Hsin-Tien Dist., New Taipei City 231, TAIWAN

[www.airlive.com](http://www.airlive.com)

## CamPro Professional, CamPro Express 64 and ONVIF Support

The CamPro Professional is AirLive's intelligent video surveillance recording software which is designed to meet most demands for professional installations. The Professional version greatly enhances the video analysis functions that can be applied to diverse surveillance scenarios. What's more, the OD-2050HD also supports ONVIF standard for ensure the cooperation between OD-2050HD and other well known CMS in the main market.



### Outdoor Installation

When install our OD-2050HD in an uncovered outdoor environment, AirLive recommend you to install it with our WMK-2056, an optional holder for mounting the OD-2050HD. For the WMK-2056 will provide a shelter to prevent OD-2050HD from being damaged by heavy rainwater. Otherwise, the water might get into OD-2050HD from the screw holds and weaken the waterproof protection.

**Note: WMK-2056 is an optional accessory, and it does not include in the OD-2050HD's package content. If you need to purchase this product, please contact with your reseller.**

## APPS for Android and iOS

AirLive has worked with IPCAM Viewer developer to add support for AirLive IPCAM. So you can view multiple AirLive cameras using Android device, iPhone, or iPad. For more information about Android or iOS apps, please visit the FAQ page.

### Specifications

#### Camera

##### Image Sensor

- 2 Mega-pixel

##### Sensor Effective Pixels

- 1920x1080

##### Lens

- 3~9mm Varifocal Lens with Auto Iris

#### Viewing Angle

- 67.8° ~ 83.7° horizontal

- 25.2° ~ 33.2° vertical

#### IR LED

- Up to 20M Working Distance

#### IP Module

#### Video

Manufacturer

**OvisLink Corp.**

5F, No.96, Min-Chuan Rd., Hsin-Tien Dist., New Taipei City 231, TAIWAN

[www.airlive.com](http://www.airlive.com)

### **Video Compress Format**

- Simultaneously H.264, MPEG4 and MJPEG

### **Video Profile**

- 20

### **Frame Rate**

- 30fps

### **Region of Interest**

- Up to 5 configurable region

### **Image Configuration**

- AE, AWB
- Noise Reduction
- Color, Brightness, Sharpness, Contrast, Hue
- Mirror/Flip
- 8 Privacy Masks
- Text, time and date OSD

### **Streaming**

- Multi-profile streaming currently
- Streaming over UDP, TCP, or HTTP
- M-JPEG streaming over HTTP (for non IE browser)
- 3GPP
- Adjustable frame rate and bandwidth
- Support both CBR and VBR
- ROI

### **Audio**

#### **Audio Encoder**

- G.711, G.726, AMR for 3GPP

#### **Audio Streaming**

- One/Two way audio

#### **Audio-in**

- External microphone jack

### **Audio-Out**

- External speaker jack

### **Network**

#### **Protocol**

- IPv4, TCP, UDP, HTTP, HTTPS, SMTP, FTP, NTP, DNS, DDNS, DHCP, DIPS, ARP, Bonjour, UPnP, RTSP, RTP, RTCP, IGMP, PPPoE, 3GPP, SMB, ICMP

#### **Security**

- Password protection
- IP filter
- HTTPS

#### **Users**

- Up to 20 simultaneous users

#### **Ethernet**

- 10/100M Fast Ethernet

### **System Integration**

#### **Integration**

- ONVIF
- Open SDK (CGI command List)
- RTSP/RTP Video Streaming

#### **Event Triggers**

- Motion detection
- External input via DI interface

#### **Motion Detection**

- Up to 10 zones

#### **Event handler**

- FTP or NAS file upload
- E-mail alert
- HTTP, and TCP notification
- DO (digital output) alarm
- Move to preset position



#### **Video Buffer**

- Pre- and post- alarm buffering

#### **General**

##### **RAM**

- 256MB

##### **Flash**

- 16MB

##### **Power Supply**

- 12V DC Power Adapter, or 802.3af PoE

##### **Power Consumption**

- 7W

##### **Connectors**

- RJ-45 10BaseT/100BaseTX
- 12V DC power jack
- DI x 1, DO x 1
- Microphone/Speaker jack
- Composite video out (BNC)
- Reset button

##### **Operating Temperature**

- -10°C to 40°C

##### **Operating Humidity**

- 20% ~ 80% (non-condensing)

#### **Viewing System**

##### **OS**

- Windows® XP, Vista, 7

##### **Browser**

- IE 6.0 or later, Firefox 2.0 or later, Safari , Google Chrome

##### **Cell Phone**

- With 3GPP player

##### **Video Player**

- VLC, Quick Time, Real Player, Core Player

#### **Software**

##### **Search & Installation**

- IP Wizard II

#### **Ordering Information:**

**AirLive OD-2050HD**      2-MegaPixel IR Outdoor Vandal PoE IPCAM